



BEHAVIORAL  
**HEALTH & RECOVERY**  
SERVICES

**MENTAL HEALTH SERVICES ACT (MHSA) PUBLIC  
STAKEHOLDER PRESENTATION ON 3 YEAR PLAN 2020-23**

**MAY 28, 2020 - 3:00PM**

**VIRTUAL PRESENTATION**

**PRESENTED BY: CHRISTINA RAJLAL, PHD, MBA**



# Housekeeping and Agenda

- MHSA 3 Yr Presentation
  - Summary
  - Changes due to COVID-19
  - Stakeholder Feedback
  - 3 Yr and 19-20 FY Changes
  - Budget
  - 30 day Public Comment
  - Looking Ahead
  - Survey
- MHSA Townhall Q & A





# SURVEY

- Survey link is provided in the chat box.
- Click on it to complete the survey, which will be recorded as formal feedback.
- <https://kcmh.wufoo.com/forms/mhsa-stakeholder-feedback-survey-20192020/>



# Executive Summary

- Mental Health Services Act (MHSA) was passed via Prop 63 in 2004.
- Community Services and Supports (CSS) and Prevention and Early Intervention (PEI) are the largest components of MHSA.
- KernBHRS budgeted \$68,972,391 for FY 2019-2020.

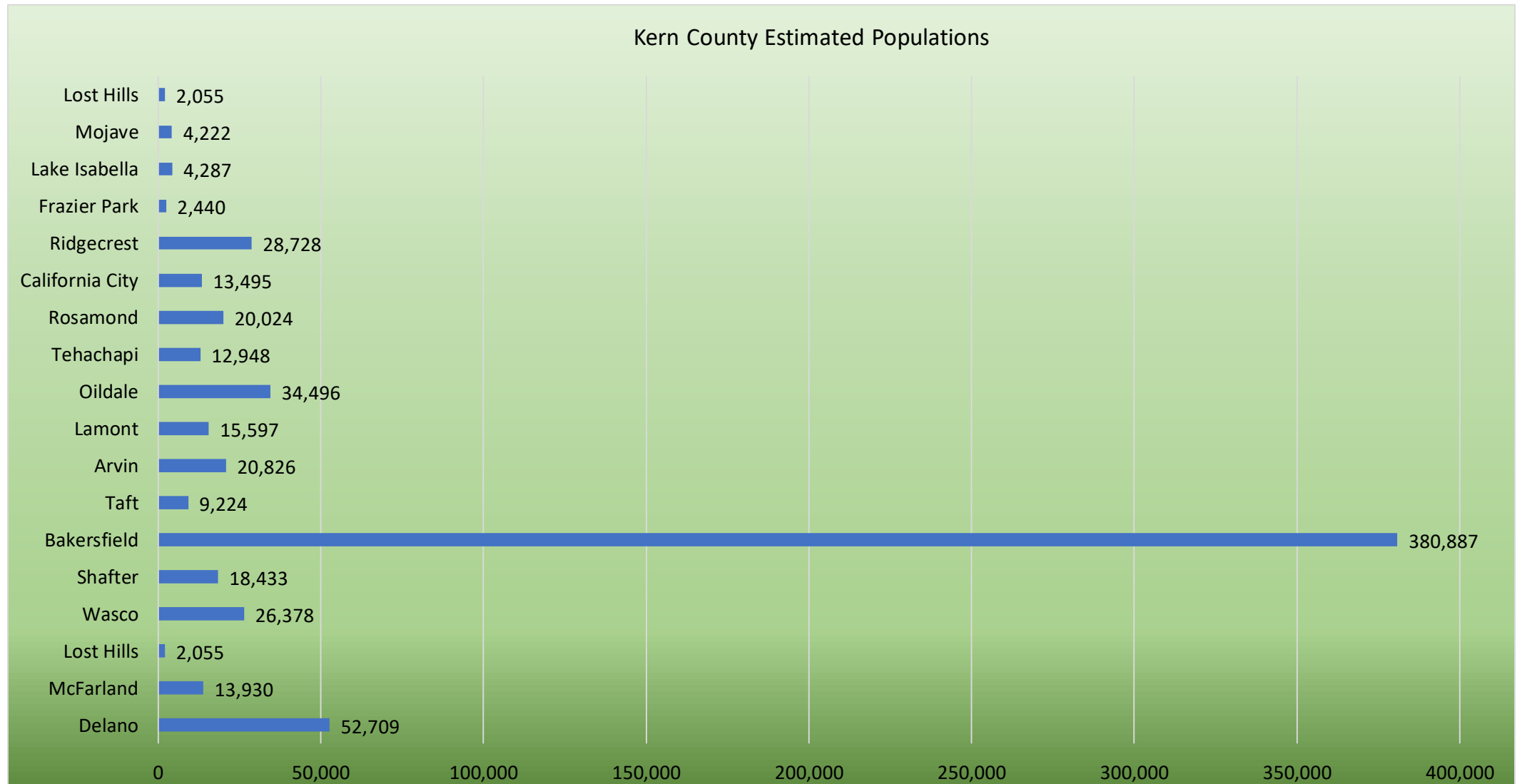
# Changes due to COVID-19

- Cancellations of group activities, face to face services, trainings, & meetings.
- Enhanced technological support to enable Telehealth, Virtual Meeting Platforms, and mobile internet and email capabilities.
- All programs supporting Clients have moved to virtual or telehealth means to limit face to face contact.
- In-person outreach and engagement is very limited and enhanced with media and social media support.
- Due to COVID-19 some programs are experiencing loss in staffing. Kern County has declared a hiring freeze amidst the COVID-19 response.

KernBHRS COVID-19 RESPONSE	CHANGES THAT HAVE OCCURRED:								
	Moved to Virtual Platform or Telehealth	Cancelled Group Activities	Reduction in Services or Partial/ Full Program Suspension	Cancellation of Events	Experienced Loss in Staffing	Enhanced Media Outreach	Expanded Services	Providing Linkage to Emergency Housing, Food & Resources	Decrease or Suspension of Outreach
PROGRAM EXPERIENCING CHANGE									
COMMUNITY SERVICES AND SUPPORTS (CSS)									
FULL SERVICE PARTNERSHIP (FSP)									
Adult Transition Team (ATT)/Homeless Adult Team(HAT)		X							
Adult Wraparound	X							X	
Assertive Community Treatment	X								
Multi-Agency Integrated Services Team (MIST)			X						
Transitional Age Youth (TAY)	X								
Wellness, Independence and Senior Enrichment	X	X		X					
Youth Wraparound	X						X		
GENERAL SYSTEM DEVELOPMENT (SD)									
Access & Assessment	X								
Adult Wraparound	X								
Consumer Family Learning Center (CFLC)	X		X						
Dialectical Behavior Therapy (DBT)	X				X				
Home to Stay			X						
Recovery and Wellness Center (RAWC)	X								
Self-Empowerment Team (SET)	X								
PREVENTION AND EARLY INTERVENTION (PEI)									
TRADITIONAL PEI									
Art Risk Reduction Program (ARRP)			X						
Court Appointed Special Advocates (CASA)	X								
Crisis Hotline							X		
Foster Care Engagement	X								
Living Well	X		X						
Outreach & Education	X	X		X		X		X	
Prepare U			X						
Risk Reduction Education and Engagement Accelerate Alternative Community Behavioral Health (REACH)	X								
Transitional Age Youth (TAY) Career Development Program	X		X						
Volunteer Senior Outreach Program (VSOP)	X							X	
Youth Brief Treatment	X								X
Youth Juvenile Justice Engagement	X								
AB114									
Family Connections DBT			X		X				
Freedom, Recovery and Empowerment with Dogs (FRED)	X	X							
Help Me Grow						X		X	
LaCLAVE			X			X			
Packed for Recovery			X						
Risk Reduction Education and Engagement Accelerate Alternative Community Behavioral Health (REACH) Expansion	X								X
Suicide Prevention Outreach and Education (O&E)	X								X
Transitional Age Youth (TAY) Dual Recovery Program		X							
Transitional Age Youth (TAY) Self-Sufficiency Program (SSP)	X	X						X	
Yoga	X	X		X		X			
Zero Suicide					X				
INNOVATIONS									
Help @ Hand	X				X				X
Smart 911				X		X			
WET									
Clinical Internship	X								
Minnesota (MN) Engagement & Recovery Oriented Training	X			X					
Psychology Internship	X								
Training Enhancement	X	X		X					



# Kern County Demographics



# STAKEHOLDER FEEDBACK



37 STAKEHOLDER MEETINGS  
OCCURRED IN FY 2019-20



389 STAKEHOLDERS WERE  
REACHED THROUGH THE  
STAKEHOLDER PROCESS



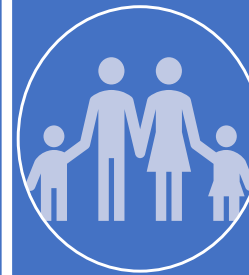
75% OF STAKEHOLDERS ARE  
26-59 YEARS OF AGE



SUPPORTS FOR  
THE HOMELESS



SUBSTANCE USE  
SUPPORT



SERVICES FOR  
YOUTH AND  
FAMILIES



OUTREACH AND  
SERVICES FOR  
LATINX  
COMMUNITIES

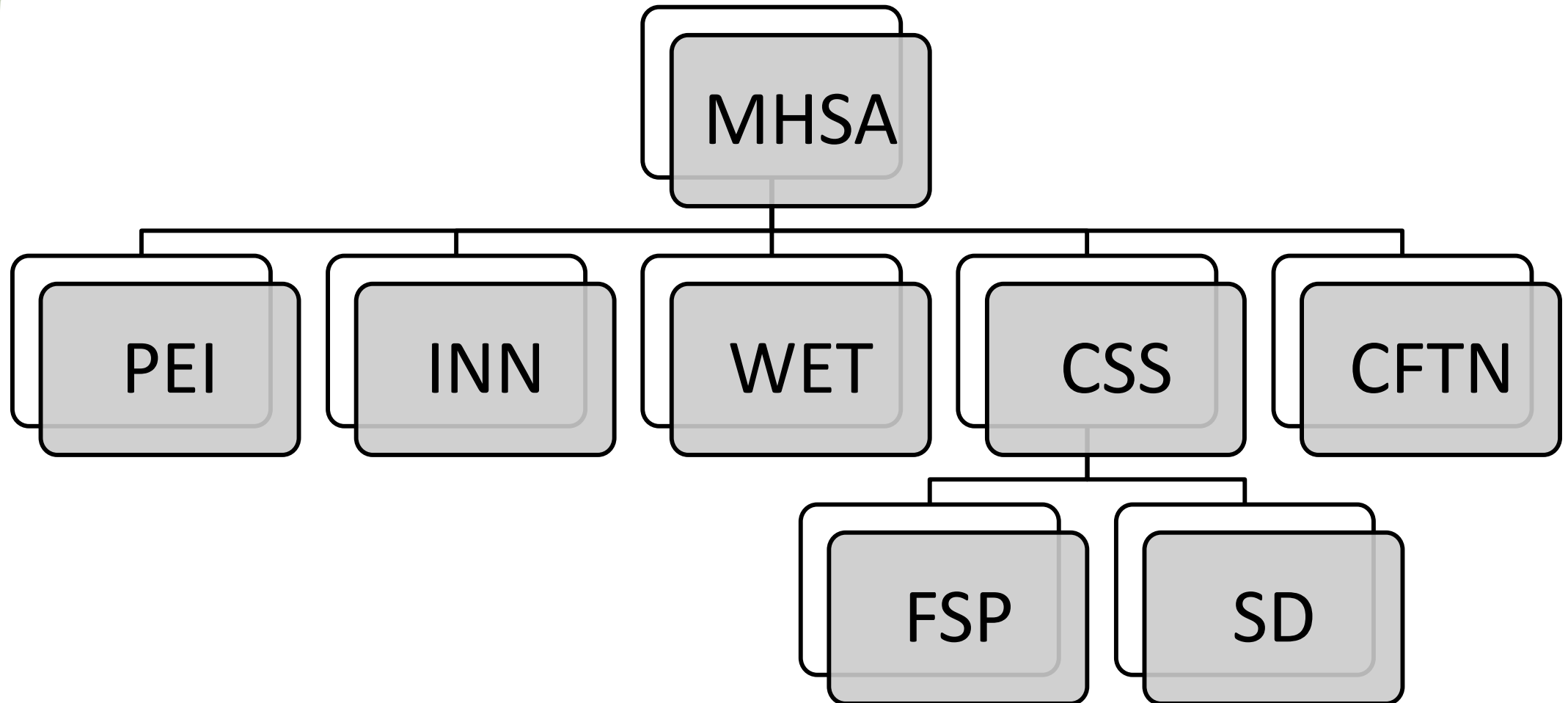


SPECIALITY  
SERVICES

NEEDS REPORTED THROUGH THE STAKEHOLDER PROCESS



# KernBHRS MHSA Funding Stream







# Community Services & Supports

## **Full-Service Partnership (FSP)**

- ACT: KernBHRS ACT North ended services December 31, 2019. Transition of the ACT North clients still in need of ACT level service will be transitioned to original KernBHRS ACT Team and Mental Health Systems (contract provider). Clients that no longer require ACT level services will be transitioned to receiving teams via warm handoff. Staff members of KernBHRS ACT North were transferred to various teams within KernBHRS.
- Adult Wraparound KernBHRS: Became an FSP Program (was previously SD program).
- WISE: WISE CSV Delano ended services December 31, 2019 due to underutilization of the program.
- Youth Wraparound: Expanded to seven more locations (North Bakersfield, Lamont/Arvin, Ridgecrest, Taft, Tehachapi, Lake Isabella, and Mojave).



# Community Services & Supports

## **System Development**

- Adult Wraparound KernBHRS: Became a FSP program.
- Adult Wraparound Core: Expanded to ten more locations (North Bakersfield, Central Bakersfield, Taft, Wasco, Mojave, Ridgecrest, Lake Isabella, Lamont/Arvin, South Bakersfield, and Frazier Park).
- Dialectical Behavior Therapy (DBT): Became its own work plan when Adult Wraparound KernBHRS became an FSP program.
- Home to Stay: Became a new program.
- DBT: Will transition to PEI under the Living Well program.
- Packed for Recovery PEI Program: Will be absorbed into Home to Stay in FY 2020-21.

## **Outreach and Engagement (O&E)**

- Outreach and Education: In the last annual report, Outreach and Education became a CSS Outreach and Engagement Program. This was an error and Outreach and Education remained as a Prevention and Early Intervention Program.



# Prevention & Early Intervention

## **PEI Changes Programs**

- Art Risk Reduction Program: We found that Children's services clientele wasn't responsive to this program and had low attendance. Adult services through our Kern Linkage Division also had low attendance in FY 18-19 and the program was revamped and focused only on Adult services through Kern Linkage Division with an enhancement of Paint Nights to increase attendance starting FY 19-20.
- Living Well: Is a new PEI program that will incorporate DBT former SD program and Family Connections DBT former AB114 program.
- Prepare U: Is a new PEI program.
- Packed for Recovery will be transitioning to Home to Stay SD Program in FY 2020-21.
- REACH Expansion (AB114): Is being absorbed into REACH (PEI) in FY 2020-21.
- TAY Career Development: Is ending June 30, 2020.



# Prevention & Early Intervention

## PEI AB114 Sustainability Plan

AB114 Program	PEI	SD	Not Continuing
Art Risk Reduction Program “ARRP”	X		
Biblical Counseling			X
Court Appointed Special Advocates “CASA”	X		
Early Psychosis Outreach & Intervention: LaCLAVE	X		
Family Connections DBT	X		
Freedom, Recovery and Empowerment with Dogs “FRED”	X		
Help Me Grow	X		
Kern Youth Resilience and Support	X		
Packed for Recovery		X	
Risk Reduction Education and Engagement Accelerate Alternative Community Behavioral Health “REACH” Expansion	X		
Suicide Prevention Outreach and Education	X		
TAY Dual Recovery	X		
TAY Self Sufficiency	X		
Transitions Curriculum			X
Yoga	X		
Zero Suicide	X		



# Innovation

## Important Changes:

- Tech Suite renamed to Help @ Hand and extended for an additional two years.



CONNECTING PEOPLE WITH CARE





# **Workforce Education & Training**

**No changes**



# **Capital Facilities and Technological Needs**

**No changes**



# Budget

## PROPOSED FUNDING FOR EACH MHSA COMPONENT FOR FISCAL YEAR 2019-2020

Community Services and Supports (CSS)	\$26,846,925
Prevention and Early Intervention (PEI) & AB114	\$15,750,369
Workforce Education and Training (WET)	\$3,297,341
Capital Facilities and Technology Needs (CFTN)	\$3,700,000
Innovation (INN)	\$5,235,966
\$68,972,391	



# Fiscal Impact

- KernBHRS budgeted \$68,972,391 for FY 2019-2020 which was an increase from FY 2018-2019.
- Due to the COVID-19 impact, the state is forecasting a 5-10% reduction in MHSA funding.
- KernBHRS will be completing an analysis on the sustainability of current programming.



## **30-day Public Comment Period Summary**

- As of May 1<sup>st</sup>, 126 people have reviewed the 3 Yr and/ or made public comment.
- 30-day Public Comment Period is from May 1-June 1, 2020.





# MHSA 3 Year Report

- 3 Year Report FY 2020-2023, is taking public comment for 30 days until June 1st.
- Plan is available at <https://www.kernbhrs.org/mhsa>
- Comment is being taken at <https://www.surveymonkey.com/r/R5DPXHY>



# 30-day Public Comment Period Summary

## Recommendations:

Responses:	Comments:
6	<b>Yoga ideas</b>
	1. The use of yoga to break stigma in the African American culture that yoga/meditation is satanic
	2. Yoga at homeless shelters
	3. Yoga for children
2	<b>Ideas for the homeless</b>
	1. After hours services for the homeless
	2. More services for the homeless
7	<b>Youth Ideas</b>
	1. Parenting/Caregiver support to include Christian support
	2. Services for youth with substance abuse disorders
	3. Resources for schools
	4. Outdoor programs for children and youth that include animals (4 responses with similar ideas)
5	<b>More Services in:</b>
	1. More services for older adults
	2. Services in Spanish
	2. More services in rural areas
	3. More LGBTQ+ services (2 responses)
4	<b>Other ideas</b>
	1. Resilience building strategies
	2. Improve the support to releasing offenders
	3. Breathwork
	4. Mindfulness practices to the Hispanic/Latino communities
2	<b>Keep doing</b>
	1. Keep Yoga classes going

This section of the presentation will include completion of the survey with your feedback.

Please finish your survey now.





**THANK YOU**

**QUESTIONS?**

**MHSATEAM@KERNBHRS.ORG**